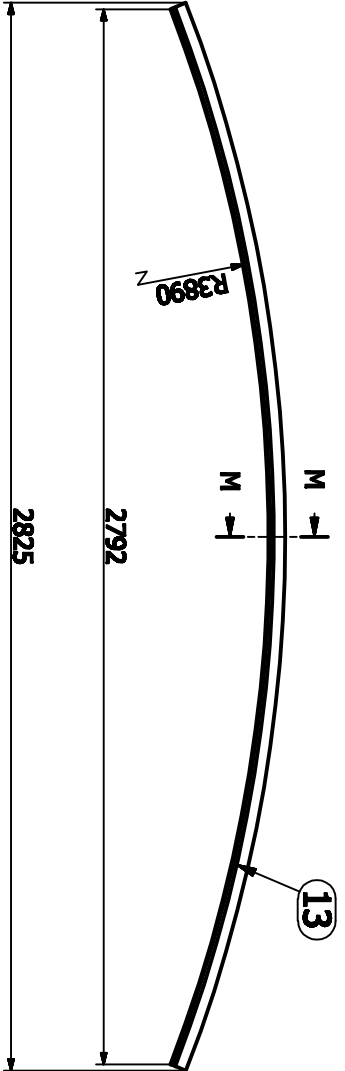
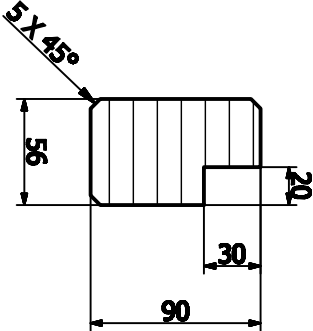
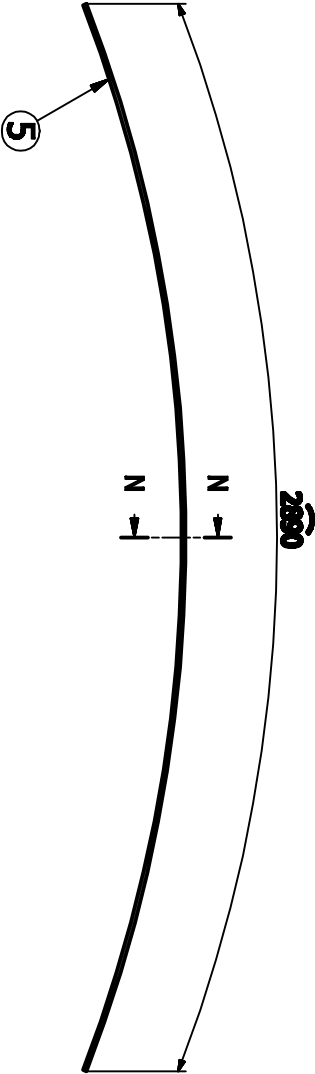
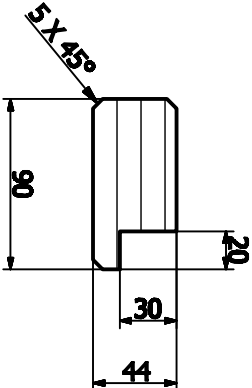


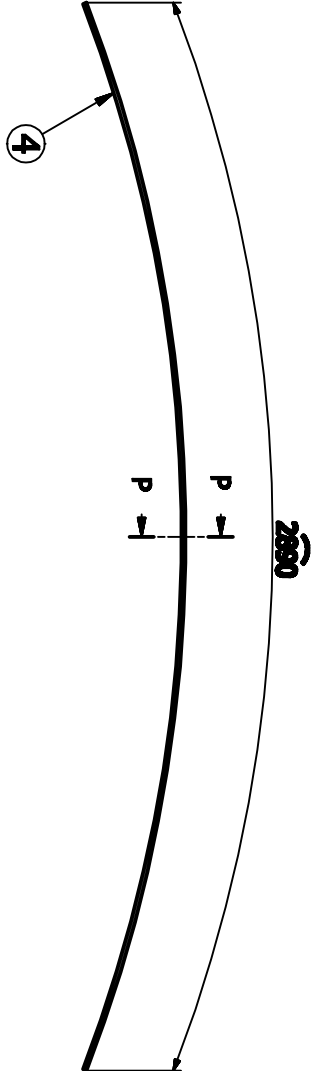
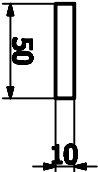
L-L (1:4)



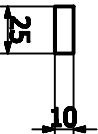
M-M (1:4)



N-N (1:4)



P-P (1:4)



FIRMA BUDOWLANA MAZAN MAREK ZDROJEWSKI 14-200 Żarnów ul. Dąbrowskiego 6a tel. (089) 648-77-74 kom. 0502-638-025 e-mail: mazanprojekt@o2.pl		SZCZEGÓŁY	
Włata rowerowo - rekreacyjna Grabowiec gm. Susz dz. nr 42 --- Gmina Susz		1:20	
		12.11.2013	
		10 ARCHIT.	